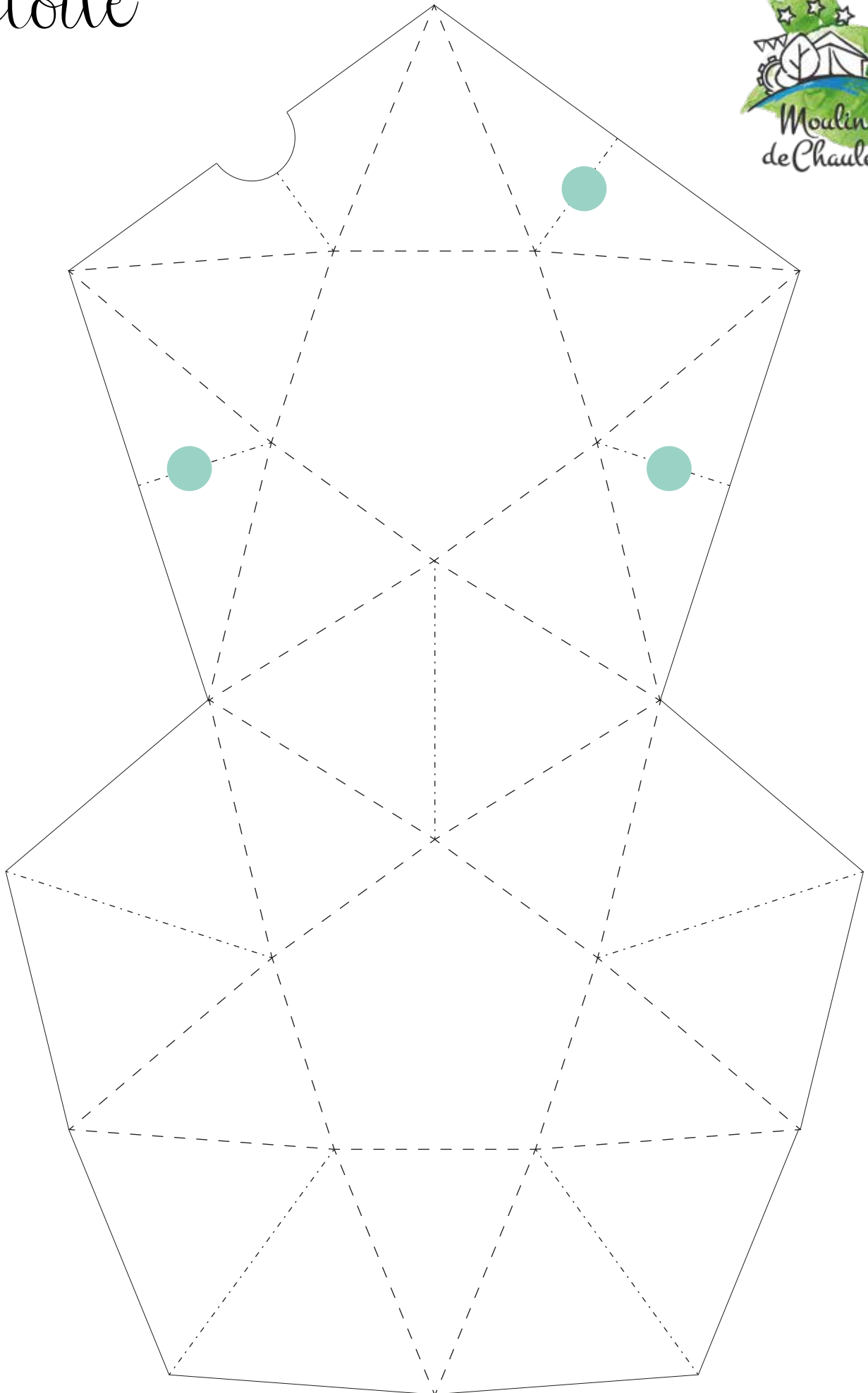
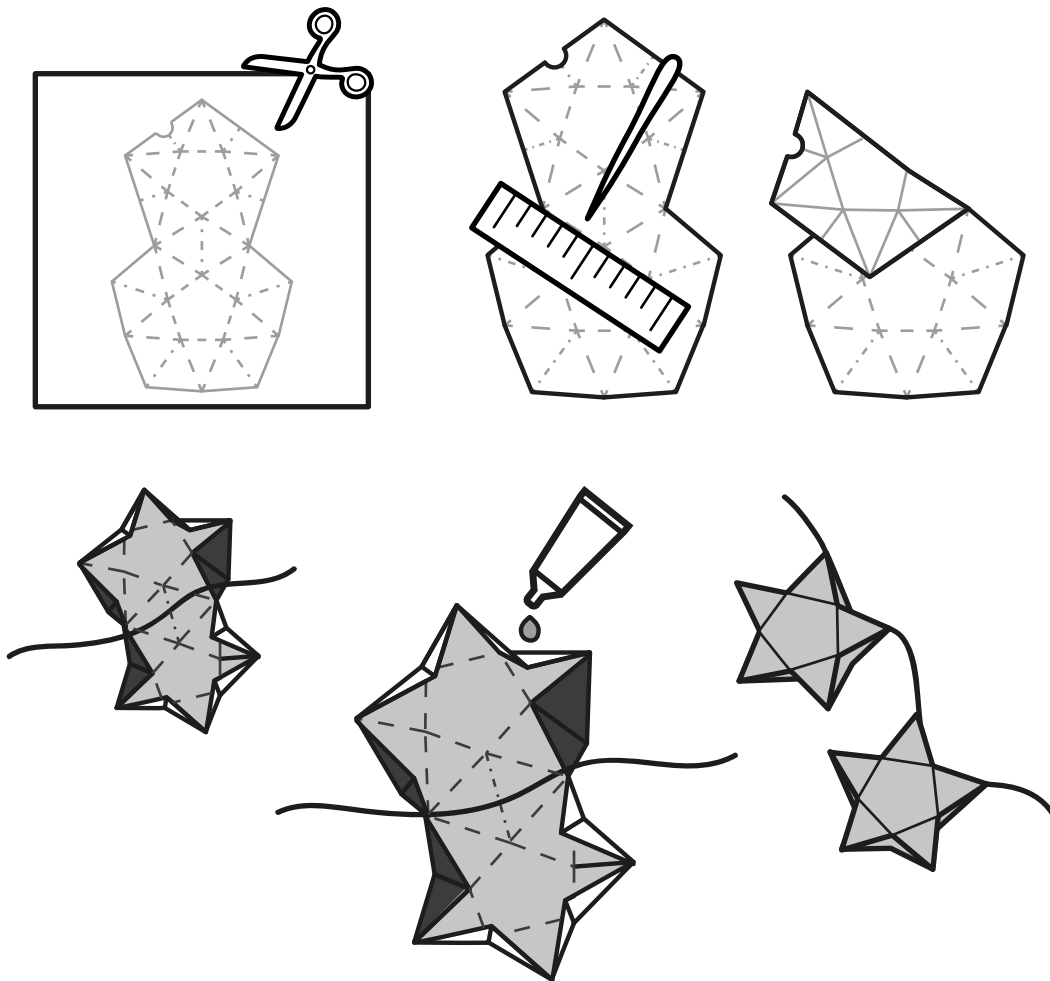


Etoile







Cut along the solid lines.

Score along all the dotted lines using a ruler (or credit card works just fine) and pointy object (such as compass or needle).

Fold along each of the lines you have just scored.

If you want the pattern to be on the outside make sharp folds and fold your star backwards. (mountain = valley , and valley = mountain)

If you want to turn it in to a garland, this is the time to place a string in the middle before pasting the tabs and closing the star.

Apply a small amount of glue to on of the tabs and stick together.

Job done – bravo!